



34 Gatwick Close, Bishop's Stortford,
Hertfordshire, CM23 5DY

www.intercounty.co.uk

Asking Price: £350,000
Freehold



Intercounty
Estate and Letting Agents



A three bedroom mid terraced property in a popular location within walking distance of local amenities and schooling, the train station and town centre. The property has been refurbished by the current owner and offers large, open plan living accommodation and comprises an entrance hallway, ground floor WC, refitted kitchen, a spacious open plan lounge/dining room and conservatory. On the first floor three bedrooms and a refitted bathroom. The property enjoys double glazing and gas fired central heating with new radiators and flooring throughout.

Externally there are gardens to the front and rear with ample street parking to the front. Offered with no onward chain.

EPC Rating C. Council Tax Band C.



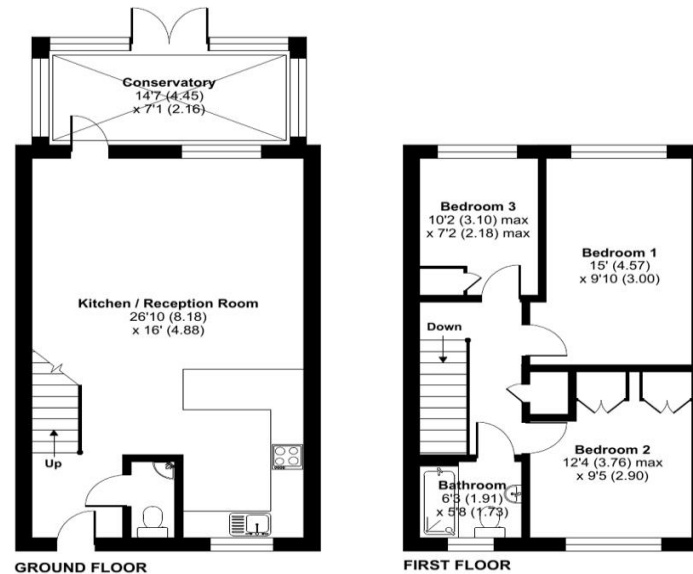
Three Bedroom House
No Chain
Open Plan Living Accommodation
Conservatory
Refurbished Throughout
Low Maintenance Garden
Potential Rental Income £1600 PCM
EPC Rating C & Council Tax Band C

ADDITIONAL INFORMATION

Bishop's Stortford is an affluent market town, situated between London and Cambridge offering fast rail links to London Liverpool Street and close proximity to both M11 motorway and Stansted Airport. The town provides reputable primary and secondary schooling, a variety of shops, both high street names and long established independents, regular market days, leisure facilities and a good choice of cafes, bars and restaurants.

Gatwick Close, Bishop's Stortford, East Hertfordshire, CM23

Approximate Area = 1060 sq ft / 98.5 sq m
For identification only - Not to scale



Floor plan produced in accordance with RICS Property Measurement Standards incorporating International Property Measurement Standards (IPMS2 Residential). © ricscom 2023. Produced for Intercounty Estate Agents. REF: 1123954



AGENTS NOTES IMPORTANT NOTE TO PURCHASERS: We endeavour to make our sales particulars accurate and reliable, however, they do not constitute or form part of any offer or any contract and none is to be relied upon as statements of representation or fact. The services, systems and appliances listed in this specification have not been tested by us and no guarantee as to their operating ability or efficiency is given. All measurements have been taken as a guide to prospective buyers only and are not precise. Floorplans where included are not to scale and accuracy is not guaranteed. If you require clarification or further information on any points please contact us, especially if you are travelling some distance to view. Fixtures and fittings other than those mentioned are to be agreed with the seller. We may refer you to recommended providers of ancillary services such as Conveyancing, Financial Services, Insurance and Surveying. We may receive a commission payment fee or other benefit (known as a referral fee) for recommending their service. You are not under any obligation to use the services of the recommended provider. The ancillary service provider may be an associated company of Intercounty.

ANTI-MONEY LAUNDERING We are required by law to conduct anti-money laundering checks on all those selling or buying a property. Whilst we retain responsibility for ensuring checks are carried out correctly and for ongoing monitoring, the initial checks are carried out on our behalf by Lifetime Legal who will contact you once you have agreed to instruct us in your sale or had an offer accepted on a property you wish to buy. The cost of these checks is £60 inc VAT, which covers the cost of obtaining relevant data and any manual checks and monitoring which might be required. This fee is paid in advance, directly to Lifetime Legal and is non-refundable.

FOR MORE DETAILS CONTACT

21 North Street, Bishop's Stortford, Hertfordshire, CM23 2LD

T: 01279 757250 | W: www.intercounty.co.uk

Intercounty
Estate and Letting Agents