



331 Rayne Road, Braintree, Essex, CM7 2QG

www.intercounty.co.uk

Offers in excess of: £375,000
Freehold



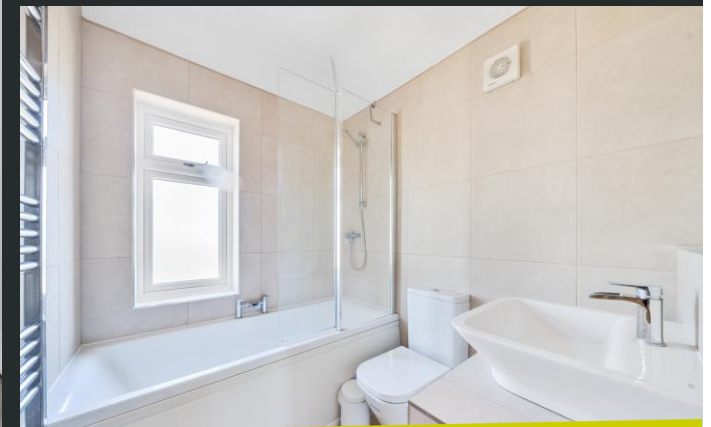
Intercounty
Estate and Letting Agents



This recently updated and spacious, three-bedroom, semi-detached home with modern features throughout, benefits from a large rear garden and is situated within close proximity to amenities and countryside walks. On entering the property, you are greeted with a spacious hallway with downstairs WC, large living room and modern kitchen/dining room with integrated appliances. This light and airy space makes it perfect for entertaining and offers ample space for family life. Three bedrooms occupy the first floor, with one and two being of a double size and a three-piece family bathroom suite.

Outside, the property features a patio area which offers a beautiful suntrap as well as a generous lawn area and mature shrubbery. To the front of the property there is a paved area which has potential for a dropped curb (planning already approved) and would offer parking for multiple vehicles.

Council Tax Band C. EPC Rating D.



Recently Upgraded Throughout
Large Rear Garden & Raised Patio
Paved Area to Front (Planning Approved for Dropped Curb)
Close to Town Centre
Easy A120 Access
Generously Sized Accommodation
Potential Rental Income £1650 PCM

ADDITIONAL INFORMATION

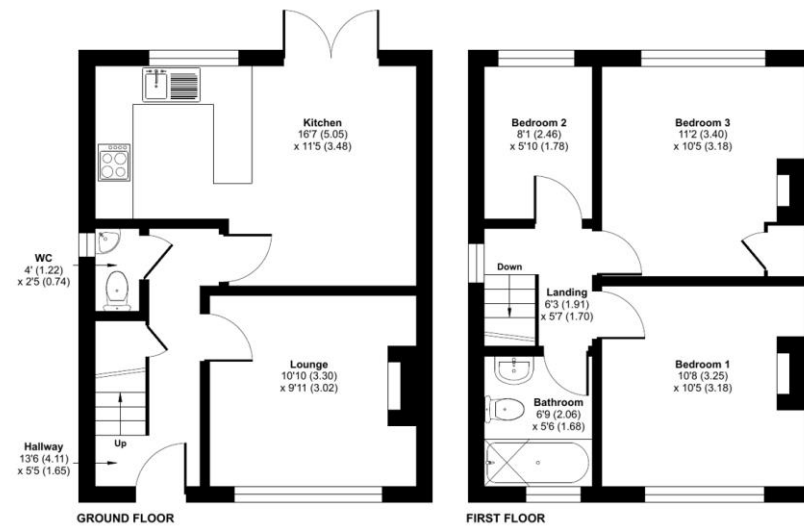
Braintree is an historic town with origins dating back to the iron and bronze ages. It is close to Chelmsford and Colchester and has two main railway stations providing services to Witham and London Liverpool Street. There is primary and secondary schooling, leisure facilities and a twice weekly market, in addition to Braintree Village.



Rayne Road, Braintree, Essex, CM7

Approximate Area = 740 sq ft / 68.7 sq m

For identification only - Not to scale



Floor plan produced in accordance with RICS Property Measurement Standards incorporating International Property Measurement Standards (IPMS2 Residential). © richcom 2024. Produced for Intercountry Estate Agents. REF: 1124128



AGENTS NOTES IMPORTANT NOTE TO PURCHASERS: We endeavour to make our sales particulars accurate and reliable, however, they do not constitute or form part of any offer or any contract and none is to be relied upon as statements of representation or fact. The services, systems and appliances listed in this specification have not been tested by us and no guarantee as to their operating ability or efficiency is given. All measurements have been taken as a guide to prospective buyers only and are not precise. Floorplans where included are not to scale and accuracy is not guaranteed. If you require clarification or further information on any points please contact us, especially if you are travelling some distance to view. Fixtures and fittings other than those mentioned are to be agreed with the seller. We may refer you to recommended providers of ancillary services such as Conveyancing, Financial Services, Insurance and Surveying. We may receive a commission payment fee or other benefit (known as a referral fee) for recommending their service. You are not under any obligation to use the services of the recommended provider. The ancillary service provider may be an associated company of Intercountry.

ANTI-MONEY LAUNDERING We are required by law to conduct anti-money laundering checks on all those selling or buying a property. Whilst we retain responsibility for ensuring checks are carried out correctly and for ongoing monitoring, the initial checks are carried out on our behalf by Lifetime Legal who will contact you once you have agreed to instruct us in your sale or had an offer accepted on a property you wish to buy. The cost of these checks is £60 inc VAT, which covers the cost of obtaining relevant data and any manual checks and monitoring which might be required. This fee is paid in advance, directly to Lifetime Legal and is non-refundable.

FOR MORE DETAILS CONTACT

Barclay House, 1 High Street, Dunmow, Essex, CM6 1UU

T: 01371 878322 | W: www.intercountry.co.uk

Intercountry
Estate and Letting Agents