



15 Orchid Close, Brewers End, Takeley,  
Bishop's Stortford, CM22 6TN

[www.intercounty.co.uk](http://www.intercounty.co.uk)

Asking Price: £189,500  
Leasehold



**Intercounty**  
Estate and Letting Agents

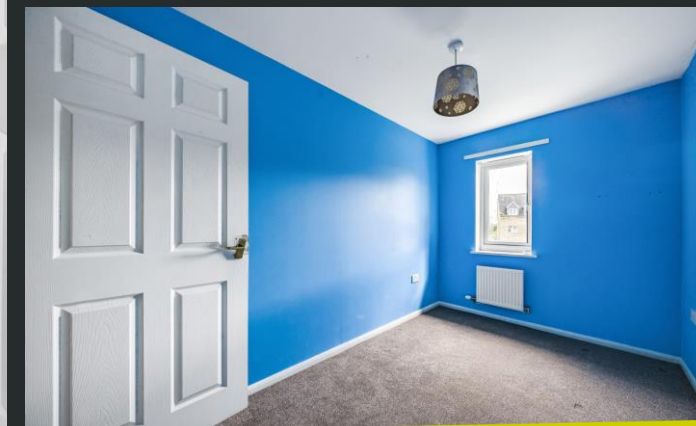


50% shared ownership of this modern mid terraced home, with opportunity to purchase additional shares up to 100%.

Internal accommodation comprises entrance hallway, lounge, kitchen/breakfast room and ground floor cloakroom, whilst on the first floor there are three bedrooms and a bathroom. Externally there is an enclosed rear garden which is laid to artificial lawn with a garden shed and gated access with a nearby allocated parking space. Offered with vacant possession and no onward chain.

The property is leasehold with 99 years remaining on the lease. The annual service charge is £462.12 and rent is £447.77 per month.

Council Tax Band D. EPC Band C.



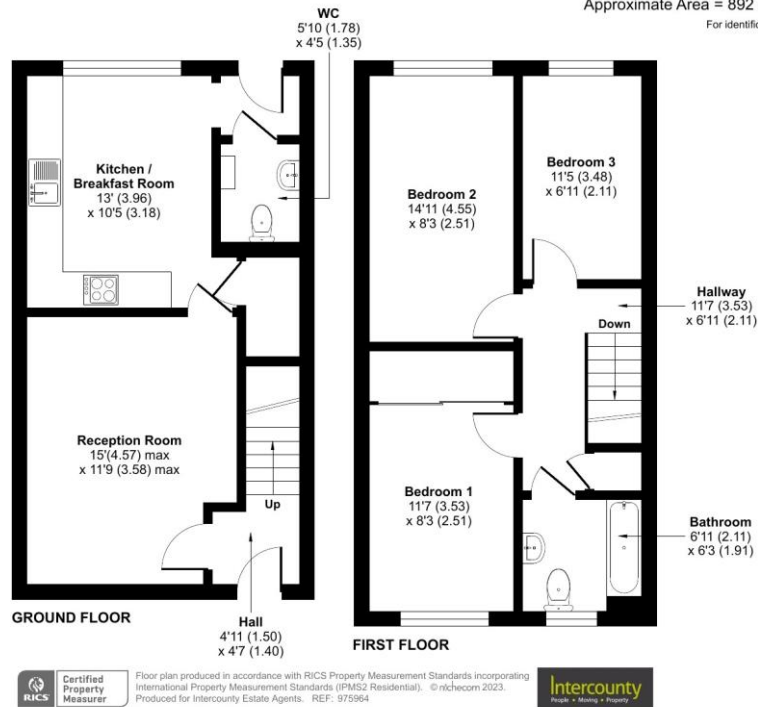
3 Bedroom Mid Terrace House  
50% Share  
Rear Garden  
Allocated Parking  
No Onward Chain  
Council Tax Band D  
EPC Band C

#### ADDITIONAL INFORMATION

Lease, ground rent and maintenance details have been provided by the seller, but their accuracy cannot be guaranteed, as we may not have seen a copy of the original lease. Should you proceed with the purchase of this property, lease details must be verified by your solicitor.

## Takeley, Bishop's Stortford, CM22

Approximate Area = 892 sq ft / 82.9 sq m  
For identification only - Not to scale



- Entrance Hall** 4'11" x 4'7" (1.5m x 1.4m)
- Reception Room** 15' x 11'9" (4.57m x 3.58m)
- Kitchen/Breakfast Room** 13' x 10'5" (3.96m x 3.18m)
- WC** 5'10" x 4'5" (1.78m x 1.35m)
- Bedroom** 11'7" x 8'3" (3.53m x 2.51m)
- Bedroom** 14'11" x 8'3" (4.55m x 2.51m)
- Bedroom** 11'5" x 6'11" (3.48m x 2.1m)
- Bathroom** 6'11" x 6'3" (2.1m x 1.9m)

**AGENTS NOTES** IMPORTANT NOTE TO PURCHASERS: We endeavour to make our sales particulars accurate and reliable, however, they do not constitute or form part of any offer or any contract and none is to be relied upon as statements of representation or fact. The services, systems and appliances listed in this specification have not been tested by us and no guarantee as to their operating ability or efficiency is given. All measurements have been taken as a guide to prospective buyers only and are not precise. Floorplans where included are not to scale and accuracy is not guaranteed. If you require clarification or further information on any points please contact us, especially if you are travelling some distance to view. Fixtures and fittings other than those mentioned are to be agreed with the seller. We may refer you to recommended providers of ancillary services such as Conveyancing, Financial Services, Insurance and Surveying. We may receive a commission payment fee or other benefit (known as a referral fee) for recommending their service. You are not under any obligation to use the services of the recommended provider. The ancillary service provider may be an associated company of Intercounty.

**ANTI-MONEY LAUNDERING** We are required by law to conduct anti-money laundering checks on all those selling or buying a property. Whilst we retain responsibility for ensuring checks are carried out correctly and for ongoing monitoring, the initial checks are carried out on our behalf by Lifetime Legal who will contact you once you have agreed to instruct us in your sale or had an offer accepted on a property you wish to buy. The cost of these checks is £60 inc VAT, which covers the cost of obtaining relevant data and any manual checks and monitoring which might be required. This fee is paid in advance, directly to Lifetime Legal and is non-refundable.

### FOR MORE DETAILS CONTACT

21 North Street, Bishop's Stortford, Hertfordshire, CM23 2LD

T: 01279 757250 | W: [www.intercounty.co.uk](http://www.intercounty.co.uk)

**Intercounty**  
Estate and Letting Agents