



Plot 2, Steeple Lodge, 66 Water Lane,
Field View, Steeple Bumpstead, Essex,
CB9 7DS

Asking Price: £730,000
Freehold

www.intercounty.co.uk



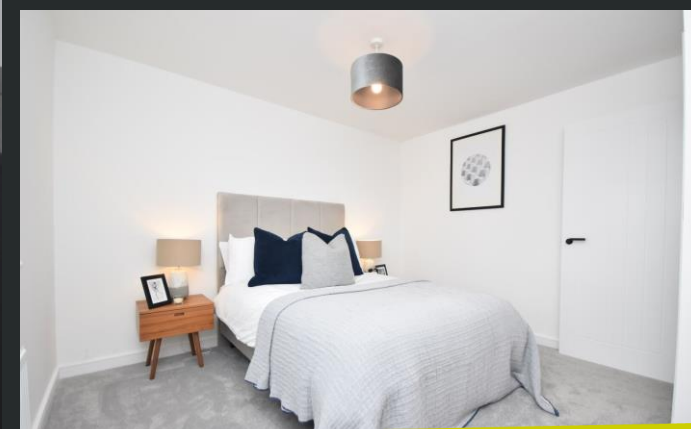
Intercounty
Estate and Letting Agents



**** Open Day Saturday 20th April - 10am - 12pm By appointment only - Thousands of pounds worth of incentives available ****

As its name suggests, the exclusive private development of Field View proudly boasts an impressive outlook to the countryside of Steeple Bumpstead from each of its homes.

This collection of just nine three and four bedroom homes benefit from secluded gardens and off street parking whilst being only minutes walk from the local shops and amenities that Steeple Bumpstead has to offer. The development has achieved the highest possible energy rating.

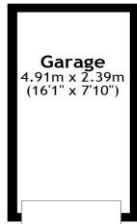


Exclusive Private Development
Four Double Bedrooms
Highest Possible Energy Efficiency Rating
Countryside Views
Bathroom & En-Suite to Main Bedroom
Walking Distance to Local Shops
Sought After Village of Steeple Bumpstead
EPC Band A & Council Tax Band TBC
Photos May be for Representation Only

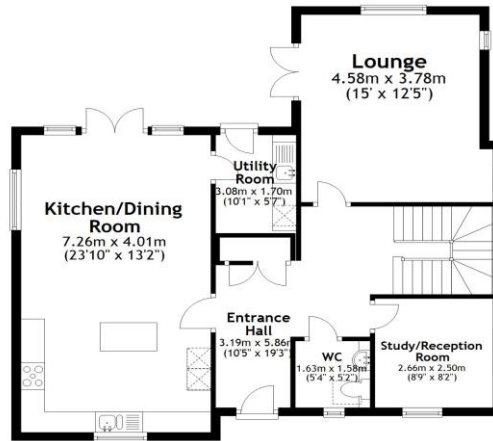
ADDITIONAL INFORMATION

Surrounded by vast expanses of open farmland extending as far as the eye can see, the tranquil community of Steeple Bumpstead offers quintessential village living in a delightful rural setting. Located in the top northwest corner of Essex, close to the county boundaries with Cambridgeshire and Suffolk, the village's picturesque combination of historical timbered, red brick and thatched cottages belie its wealth of modern amenities.

The village boasts two churches, a doctor's surgery, two local pubs plus a convenience store and Post Office. Family life is well catered for focusing around the village's own pre-school and primary school, while the local area offers a wide choice of excellent secondary schools, including popular options such as Churchill Special Free School in Haverhill and Saffron Walden County High School.



Ground Floor
Approx. 91.5 sq. metres (985.4 sq. feet)



First Floor
Approx. 86.4 sq. metres (929.8 sq. feet)



Total area: approx. 177.9 sq. metres (1915.2 sq. feet)

AGENTS NOTES IMPORTANT NOTE TO PURCHASERS: We endeavour to make our sales particulars accurate and reliable, however, they do not constitute or form part of any offer or any contract and none is to be relied upon as statements of representation or fact. The services, systems and appliances listed in this specification have not been tested by us and no guarantee as to their operating ability or efficiency is given. All measurements have been taken as a guide to prospective buyers only and are not precise. Floorplans where included are not to scale and accuracy is not guaranteed. If you require clarification or further information on any points please contact us, especially if you are travelling some distance to view. Fixtures and fittings other than those mentioned are to be agreed with the seller. We may refer you to recommended providers of ancillary services such as Conveyancing, Financial Services, Insurance and Surveying. We may receive a commission payment fee or other benefit (known as a referral fee) for recommending their service. You are not under any obligation to use the services of the recommended provider. The ancillary service provider may be an associated company of Intercountry.

ANTI-MONEY LAUNDERING We are required by law to conduct anti-money laundering checks on all those selling or buying a property. Whilst we retain responsibility for ensuring checks are carried out correctly and for ongoing monitoring, the initial checks are carried out on our behalf by Lifetime Legal who will contact you once you have agreed to instruct us in your sale or had an offer accepted on a property you wish to buy. The cost of these checks is £60 inc VAT, which covers the cost of obtaining relevant data and any manual checks and monitoring which might be required. This fee is paid in advance, directly to Lifetime Legal and is non-refundable.

FOR MORE DETAILS CONTACT

57 High Street, Saffron Walden, Essex, CB10 1AA

T: 01799 522641 | W: www.intercountry.co.uk

Intercountry
Estate and Letting Agents