



45 Vernon Close, Henham, Bishop's Stortford,  
Essex, CM22 6AF

[www.intercounty.co.uk](http://www.intercounty.co.uk)

Offers Over: £485,000  
Freehold



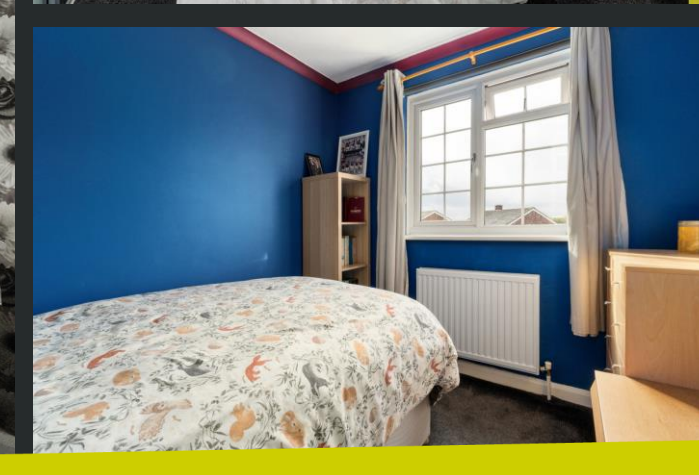
**Intercounty**  
Estate and Letting Agents



A well-presented, versatile three/four bedroom family home, with internal accommodation comprising entrance hall, reception room, leading through to dining room, sunroom, kitchen, utility, rear hall, conservatory and ground floor WC. The inner hall leads to a study/bedroom. On the first floor there are three bedrooms and a family bathroom.

Externally there is a long driveway and garden to the front with a water feature, whilst to the rear there is an attractive lawned garden with various seating areas. The property is in a great location with easy accessibility to the village amenities and primary school.

EPC Band C. Council Tax Band D.



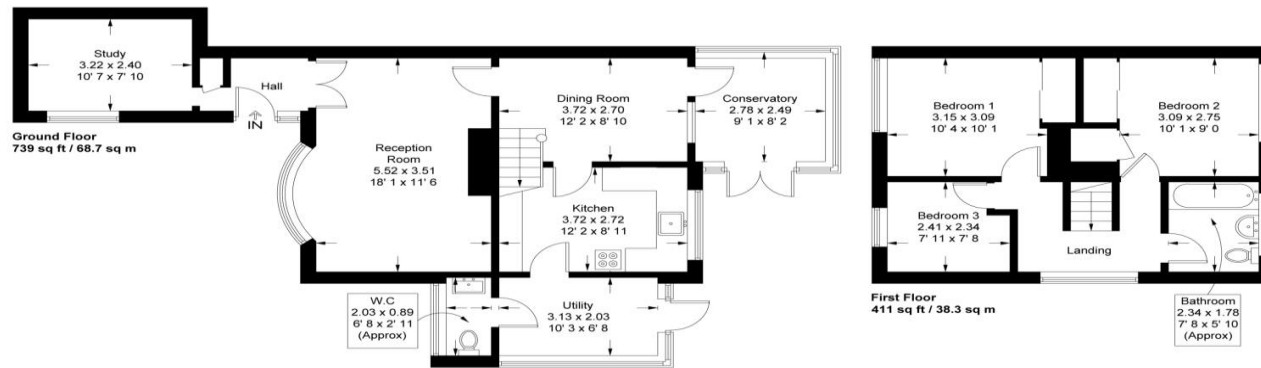
3/4 Bedroom Detached Family Home  
2/3 Reception Rooms  
Sunroom and Conservatory/Utility  
Downstairs WC  
Long Driveway  
Front & Rear Gardens  
Close to Local Primary Schooling  
EPC Band C & Council Tax Band D

#### ADDITIONAL INFORMATION

Henham, a picturesque village and a parish in the county of Essex stands on a hill, two miles northeast of Elsenham railway station, and six miles northeast of Bishop's Stortford (and the shopping facilities and amenities of the town). Stansted Airport is within easy reach, providing rail links to London Liverpool Street and access to M11.

## Vernons Close

Approximate Gross Internal Area = 1150 sq ft / 107 sq m



This plan is not to scale and must be used as layout guidance only. All measurements and areas are approximate and should not be relied upon to provide accurate information. This plan must not be relied upon when making property valuations, design considerations or any other such relevant decisions. We accept no responsibility or liability (whether in contract, tort or otherwise) in relation to any loss whatsoever arising from or in connection with any use of this plan or the adequacy, accuracy or completeness of it or any information within it.

Intercounty

**AGENTS NOTES** IMPORTANT NOTE TO PURCHASERS: We endeavour to make our sales particulars accurate and reliable, however, they do not constitute or form part of any offer or any contract and none is to be relied upon as statements of representation or fact. The services, systems and appliances listed in this specification have not been tested by us and no guarantee as to their operating ability or efficiency is given. All measurements have been taken as a guide to prospective buyers only and are not precise. Floorplans where included are not to scale and accuracy is not guaranteed. If you require clarification or further information on any points please contact us, especially if you are travelling some distance to view. Fixtures and fittings other than those mentioned are to be agreed with the seller. We may refer you to recommended providers of ancillary services such as Conveyancing, Financial Services, Insurance and Surveying. We may receive a commission payment fee or other benefit (known as a referral fee) for recommending their service. You are not under any obligation to use the services of the recommended provider. The ancillary service provider may be an associated company of Intercounty.

**ANTI-MONEY LAUNDERING** We are required by law to conduct anti-money laundering checks on all those selling or buying a property. Whilst we retain responsibility for ensuring checks are carried out correctly and for ongoing monitoring, the initial checks are carried out on our behalf by Lifetime Legal who will contact you once you have agreed to instruct us in your sale or had an offer accepted on a property you wish to buy. The cost of these checks is £60 inc VAT, which covers the cost of obtaining relevant data and any manual checks and monitoring which might be required. This fee is paid in advance, directly to Lifetime Legal and is non-refundable.

### FOR MORE DETAILS CONTACT

8 Cambridge Road, Stansted, Essex, CM24 8BZ

T: 01279 814400 | W: [www.intercounty.co.uk](http://www.intercounty.co.uk)

**Intercounty**  
Estate and Letting Agents