



9 Bowlby Hill, Gilston, Hertfordshire,  
CM20 2FZ

[www.intercounty.co.uk](http://www.intercounty.co.uk)

Asking Price: £868,000  
Freehold



**Intercounty**  
Estate and Letting Agents



An elegant, four-bedroom detached family home, situated on one of the best plots on the popular Terlings Park Development. The property benefits from spacious living accommodation comprising an entrance hall, large L-shaped kitchen/living/dining room, separate lounge, office and a ground floor WC. The first floor offers four double bedrooms, two ensuites and a family bathroom.

Externally is a single garage with additional driveway parking, private rear garden with excellent entertainment space and beautiful views over parkland and countryside.

Council Tax Band G. EPC Rating B.



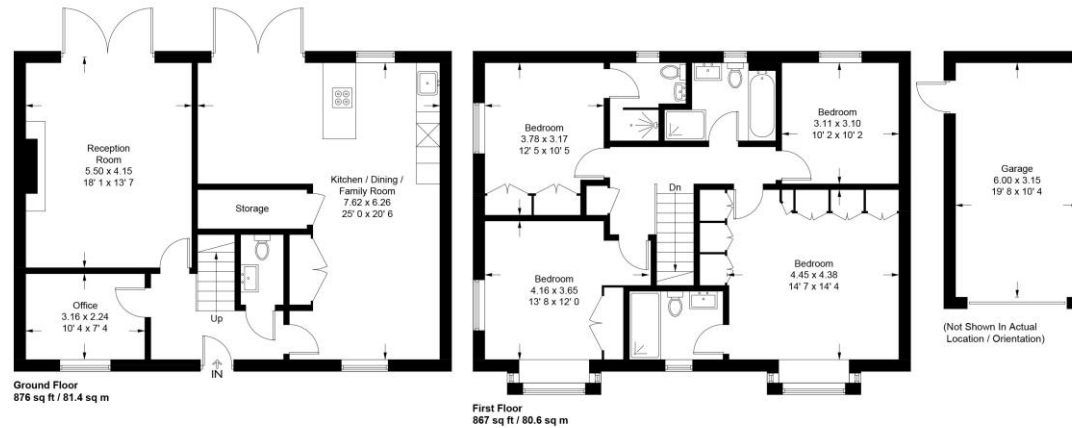
Four Bedroom Detached House  
2 Ensuites & 1 Family Bathroom  
Spacious Living Accommodation  
Beautiful Countryside Views  
Off Road Parking  
Council Tax Band G  
EPC Rating B

#### ADDITIONAL INFORMATION

Gilston is a village in East Hertfordshire surrounded by rolling countryside with open fields and woodland, with its own village Inn. The village is located with easy access to M11 and mainline train services into London. The market towns of Hertford, Ware and Bishop's Stortford are within a convenient drive, all of which offer further shopping, schooling, and recreational amenities.

## Bowlby Hill

Approximate Gross Internal Area = 1743 sq ft / 162 sq m  
Garage = 204 sq ft / 19 sq m  
Total = 1947 sq ft / 181 sq m



This plan is not to scale and must be used as layout guidance only. All measurements and areas are approximate and should not be relied upon to provide accurate information. This plan must not be relied upon when making property valuations, design considerations or any other such relevant decisions. We accept no responsibility or liability (whether in contract, tort or otherwise) in relation to any loss whatsoever arising from or in connection with any use of this plan or the adequacy, accuracy or completeness of it or any information within it.

**AGENTS NOTES** IMPORTANT NOTE TO PURCHASERS: We endeavour to make our sales particulars accurate and reliable, however, they do not constitute or form part of any offer or any contract and none is to be relied upon as statements of representation or fact. The services, systems and appliances listed in this specification have not been tested by us and no guarantee as to their operating ability or efficiency is given. All measurements have been taken as a guide to prospective buyers only and are not precise. Floorplans where included are not to scale and accuracy is not guaranteed. If you require clarification or further information on any points please contact us, especially if you are travelling some distance to view. Fixtures and fittings other than those mentioned are to be agreed with the seller. We may refer you to recommended providers of ancillary services such as Conveyancing, Financial Services, Insurance and Surveying. We may receive a commission payment fee or other benefit (known as a referral fee) for recommending their service. You are not under any obligation to use the services of the recommended provider. The ancillary service provider may be an associated company of Intercountry.

**ANTI-MONEY LAUNDERING** We are required by law to conduct anti-money laundering checks on all those selling or buying a property. Whilst we retain responsibility for ensuring checks are carried out correctly and for ongoing monitoring, the initial checks are carried out on our behalf by Lifetime Legal who will contact you once you have agreed to instruct us in your sale or had an offer accepted on a property you wish to buy. The cost of these checks is £60 inc VAT, which covers the cost of obtaining relevant data and any manual checks and monitoring which might be required. This fee is paid in advance, directly to Lifetime Legal and is non-refundable.

### FOR MORE DETAILS CONTACT

1 Bell Street, Sawbridgeworth, Hertfordshire, CM21 9AR

T: 01279 600333 | W: [www.intercountry.co.uk](http://www.intercountry.co.uk)

**Intercountry**  
Estate and Letting Agents