



69 Birchwood, Birchanger,
Bishop's Stortford, CM23 5QL

Offers in excess of: £450,000
Freehold

www.intercounty.co.uk



Intercounty
Estate and Letting Agents



A well-proportioned three bedroom extended semi-detached family home in the village of Birchanger close to the primary school, open fields and farmland. The accommodation comprises entrance porch, entrance hall, cloakroom, walk-in pantry, lounge and an open plan kitchen/family/dining room with island unit, quartz worktops and bi-folding doors onto garden. On the first floor there are three bedrooms (all with built-in wardrobes) and a luxury bathroom with a walk-in shower.

Outside is a large driveway providing ample parking, whilst to the rear is a low maintenance part walled garden and a gate leading to the open fields and farmland. The garage has been converted to a gym/home office.

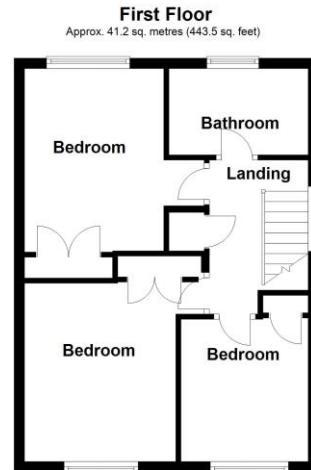
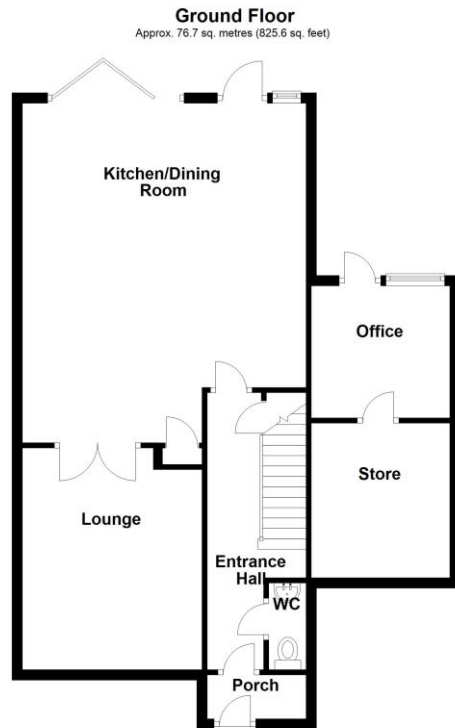
EPC Rating C. Council Tax Band D.



3 Bedroom Extended Family Home
Superb Open Plan Kitchen/Dining/Family Room
Lounge
Luxury Bathroom
Ample Driveway Parking
Low Maintenance Garden
Home Office/Gym
Potential Rental Income £1650 PCM
EPC Rating C & Council Tax Band D

ADDITIONAL INFORMATION

Birchanger is a small ancient village in northeast Essex on the boundary of Bishops Stortford. The village has a grade II listed church and cricket, bowls, and football clubs, it lies near Stansted Airport and M11 connections. Bishops Stortford provides schooling for all ages, a variety of shops, regular market days, leisure facilities and a good choice of cafes, bars and restaurants.



Total area: approx. 117.9 sq. metres (1269.1 sq. feet)

Entrance Porch 6'3" x 2'9" (1.9m x 0.84m)

Entrance Hall 17'6" x 5'7" (5.33m x 1.7m)

Cloakroom/WC 5'6" x 2'4" (1.68m x 0.7m)

Open Plan Kitchen/Dining/Family Room

21'5" x 17'9" (6.53m x 5.4m)

Lounge 14' x 11'4" (4.27m x 3.45m)

First Floor

Bedroom 1 11'5" x 8' (3.48m x 2.44m)

Bedroom 2 13' x 8'8" (3.96m x 2.64m)

Bedroom 3 9' x 8'5" (2.74m x 2.57m)

Bathroom 9'3" x 5'5" (2.82m x 1.65m)

AGENTS NOTES IMPORTANT NOTE TO PURCHASERS: We endeavour to make our sales particulars accurate and reliable, however, they do not constitute or form part of any offer or any contract and none is to be relied upon as statements of representation or fact. The services, systems and appliances listed in this specification have not been tested by us and no guarantee as to their operating ability or efficiency is given. All measurements have been taken as a guide to prospective buyers only and are not precise. Floorplans where included are not to scale and accuracy is not guaranteed. If you require clarification or further information on any points please contact us, especially if you are travelling some distance to view. Fixtures and fittings other than those mentioned are to be agreed with the seller. We may refer you to recommended providers of ancillary services such as Conveyancing, Financial Services, Insurance and Surveying. We may receive a commission payment fee or other benefit (known as a referral fee) for recommending their service. You are not under any obligation to use the services of the recommended provider. The ancillary service provider may be an associated company of Intercountry.

ANTI-MONEY LAUNDERING We are required by law to conduct anti-money laundering checks on all those selling or buying a property. Whilst we retain responsibility for ensuring checks are carried out correctly and for ongoing monitoring, the initial checks are carried out on our behalf by Lifetime Legal who will contact you once you have agreed to instruct us in your sale or had an offer accepted on a property you wish to buy. The cost of these checks is £60 inc VAT, which covers the cost of obtaining relevant data and any manual checks and monitoring which might be required. This fee is paid in advance, directly to Lifetime Legal and is non-refundable.

FOR MORE DETAILS CONTACT

8 Cambridge Road, Stansted, Essex, CM24 8BZ

T: 01279 814400 | W: www.intercountry.co.uk

Intercountry
Estate and Letting Agents