



6 King Street, Bishop's Stortford,
Hertfordshire, CM23 2NB

Offers in excess of: £600,000
Freehold

www.intercounty.co.uk



Intercounty
Estate and Letting Agents



A beautifully presented three bedroom house set within the heart of Bishop's Stortford in the historic road of King Street offering wonderful open plan living accommodation. The property offers an entrance hall, good size dining room with separate lounge, sunny kitchen/breakfast room overlooking the rear garden and a ground floor cloakroom/WC. On the first floor there are three good size bedrooms, an en-suite to the main bedroom, plus an attractive family bathroom, whilst on the top floor is a useful loft room, currently used as a study.

Outside to the rear is a private and unoverlooked landscaped garden and off-road parking to the front and side, including a carport. There is also a large basement offering useful storage.

Council Tax Band D. EPC Rating E.



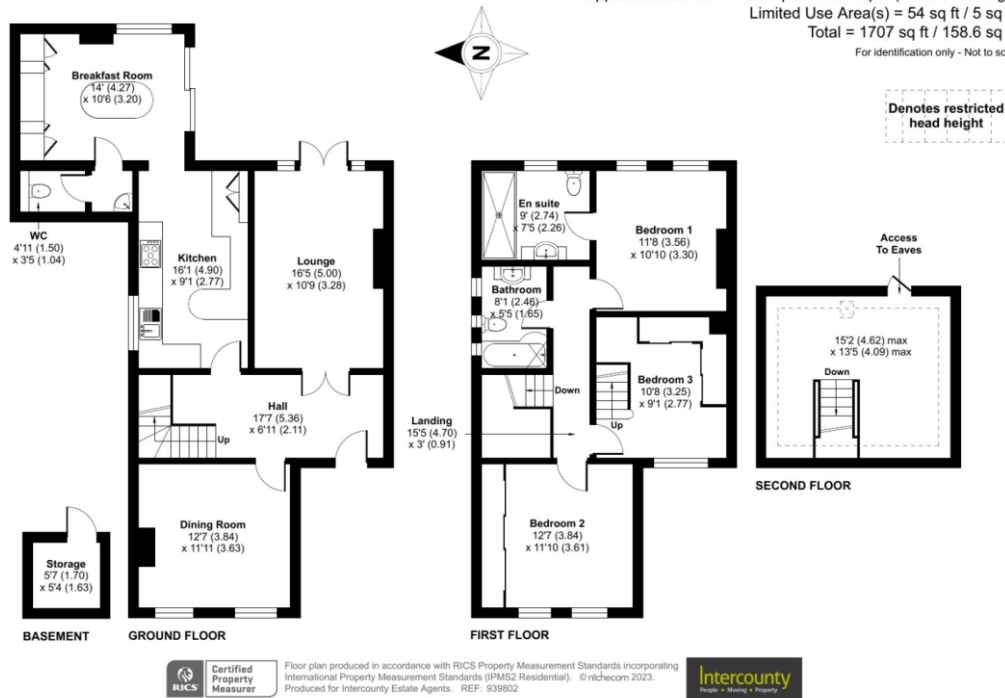
3 Bedroom House
Town Centre Location
Large Ground Floor Living Accommodation
Open Plan Kitchen/Breakfast Room
Ground Floor WC
En-suite & Bathroom
Loft Room
Council Tax Band D
EPC Rating E

ADDITIONAL INFORMATION

Bishop's Stortford is an affluent market town, situated between London and Cambridge offering fast rail links to London Liverpool Street and proximity to both M11 motorway and Stansted Airport. The town provides reputable primary and secondary schooling, a variety of shops, both high street names and long-established independents, regular market days, leisure facilities and a good choice of cafes, bars, and restaurants.

King Street, Bishop's Stortford, CM23

Approximate Area = 1653 sq ft / 153.5 sq m (includes storage)
 Limited Use Area(s) = 54 sq ft / 5 sq m
 Total = 1707 sq ft / 158.6 sq m
 For identification only - Not to scale



- Entrance Hall** 17'7" x 6'11" (5.36m x 2.1m)
- Dining Room** 12'7" x 11'11" (3.84m x 3.63m)
- Lounge** 16'5" x 10'9" (5m x 3.28m)
- Kitchen** 16'1" x 9'1" (4.9m x 2.77m)
- Breakfast Room** 14' x 10'6" (4.27m x 3.2m)
- WC** 4'11" x 3'5" (1.5m x 1.04m)
- First Floor**
- Bedroom 1** 10'8" x 10'10" (3.25m x 3.3m)
- En-suite** 9' x 7'5" (2.74m x 2.26m)
- Bedroom 2** 12'7" x 11'10" (3.84m x 3.6m)
- Bedroom 3** 10'8" x 9'1" (3.25m x 2.77m)
- Bathroom** 8'1" x 5'5" (2.46m x 1.65m)
- Loft Room** 15'2" x 13'5" (4.62m x 4.1m)

AGENTS NOTES IMPORTANT NOTE TO PURCHASERS: We endeavour to make our sales particulars accurate and reliable, however, they do not constitute or form part of any offer or any contract and none is to be relied upon as statements of representation or fact. The services, systems and appliances listed in this specification have not been tested by us and no guarantee as to their operating ability or efficiency is given. All measurements have been taken as a guide to prospective buyers only and are not precise. Floorplans where included are not to scale and accuracy is not guaranteed. If you require clarification or further information on any points please contact us, especially if you are travelling some distance to view. Fixtures and fittings other than those mentioned are to be agreed with the seller. We may refer you to recommended providers of ancillary services such as Conveyancing, Financial Services, Insurance and Surveying. We may receive a commission payment fee or other benefit (known as a referral fee) for recommending their service. You are not under any obligation to use the services of the recommended provider. The ancillary service provider may be an associated company of Intercountry.

ANTI-MONEY LAUNDERING We are required by law to conduct anti-money laundering checks on all those selling or buying a property. Whilst we retain responsibility for ensuring checks are carried out correctly and for ongoing monitoring, the initial checks are carried out on our behalf by Lifetime Legal who will contact you once you have agreed to instruct us in your sale or had an offer accepted on a property you wish to buy. The cost of these checks is £60 inc VAT, which covers the cost of obtaining relevant data and any manual checks and monitoring which might be required. This fee is paid in advance, directly to Lifetime Legal and is non-refundable.

FOR MORE DETAILS CONTACT

21 North Street, Bishop's Stortford, Hertfordshire, CM23 2LD

T: 01279 757250 | W: www.intercountry.co.uk

Intercountry
 Estate and Letting Agents