



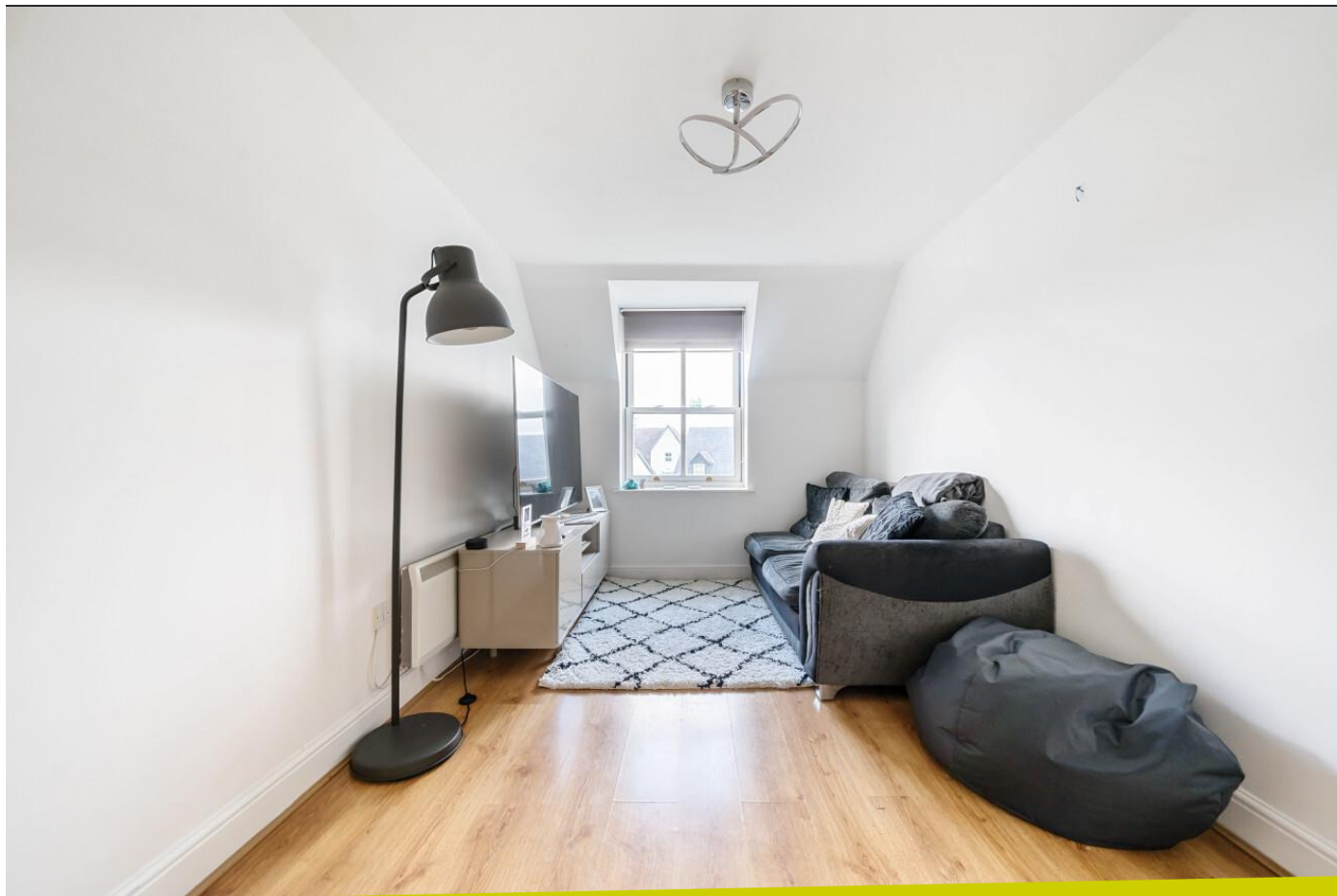
21 Haslers Place, Haslers Lane, Dunmow,  
CM6 1AJ

[www.intercounty.co.uk](http://www.intercounty.co.uk)

Asking Price: £180,000  
Leasehold



**Intercounty**  
Estate and Letting Agents



A well-presented and spacious two-bedroom, upper floor apartment. The property is situated in a gated development in the heart of Dunmow town centre and benefits from being marketed with NO ONWARD CHAIN. The property consists of hallway leading to living room, separate kitchen and two good sized bedrooms with built-in wardrobe and en-suite to bedroom one, in addition to the family bathroom. The property further benefits from secured allocated parking and communal garden space.

The property is leasehold with 107 years remaining on the lease. The annual service charge is £1928 and ground rent is £150 per annum.

Council Tax Band C. EPC Rating B.



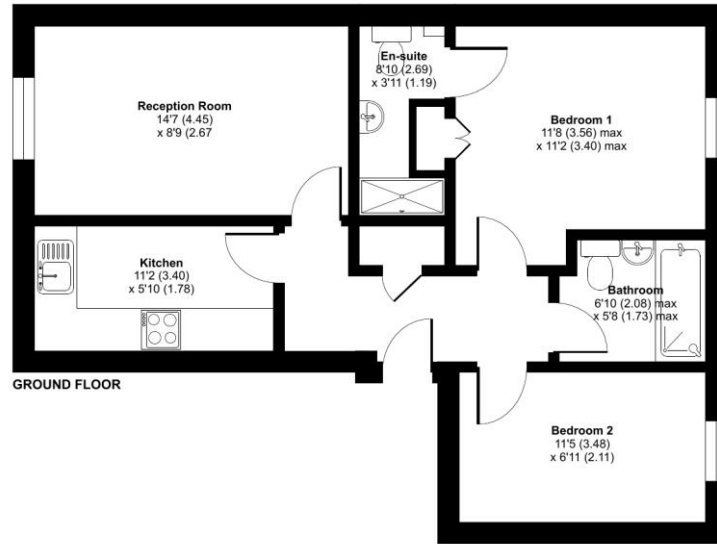
2 Bedroom Apartment  
En-Suite & Bathroom  
Gated Development  
Secure Allocated Parking  
Communal Garden  
Potential Rental Income £800 PCM  
No Onward Chain  
Council Tax Band C  
EPC Rating B

#### ADDITIONAL INFORMATION

Lease, ground rent and maintenance details have been provided by the seller, but their accuracy cannot be guaranteed, as we may not have seen a copy of the original lease. Should you proceed with the purchase of this property, lease details must be verified by your solicitor.

## Haslers Place, Haslers Lane, Dunmow, CM6

Approximate Area = 569 sq ft / 52.9 sq m  
For identification only - Not to scale



GROUND FLOOR



Floor plan produced in accordance with RICS Property Measurement Standards incorporating International Property Measurement Standards (IPMS2 Residential). © rics/ecom 2023. Produced for Intercountry Estate Agents. REF: 1017182



**Entrance Hallway** 12'4" x 3'11" (3.76m x 1.2m)  
**Reception/Living Room** 14'7" x 8'9" (4.45m x 2.67m)  
**Kitchen** 11'2" x 5'10" (3.4m x 1.78m)  
**Bedroom 1** 11'8" x 11'2" (3.56m x 3.4m)  
**Ensuite** 8'10" x 3'11" (2.7m x 1.2m)  
**Bedroom 2** 11'5" x 6'11" (3.48m x 2.1m)  
**Bathroom** 6'10" x 5'8" (2.08m x 1.73m)

**AGENTS NOTES** IMPORTANT NOTE TO PURCHASERS: We endeavour to make our sales particulars accurate and reliable, however, they do not constitute or form part of any offer or any contract and none is to be relied upon as statements of representation or fact. The services, systems and appliances listed in this specification have not been tested by us and no guarantee as to their operating ability or efficiency is given. All measurements have been taken as a guide to prospective buyers only and are not precise. Floorplans where included are not to scale and accuracy is not guaranteed. If you require clarification or further information on any points please contact us, especially if you are travelling some distance to view. Fixtures and fittings other than those mentioned are to be agreed with the seller. We may refer you to recommended providers of ancillary services such as Conveyancing, Financial Services, Insurance and Surveying. We may receive a commission payment fee or other benefit (known as a referral fee) for recommending their service. You are not under any obligation to use the services of the recommended provider. The ancillary service provider may be an associated company of Intercountry.

**ANTI-MONEY LAUNDERING** We are required by law to conduct anti-money laundering checks on all those selling or buying a property. Whilst we retain responsibility for ensuring checks are carried out correctly and for ongoing monitoring, the initial checks are carried out on our behalf by Lifetime Legal who will contact you once you have agreed to instruct us in your sale or had an offer accepted on a property you wish to buy. The cost of these checks is £60 inc VAT, which covers the cost of obtaining relevant data and any manual checks and monitoring which might be required. This fee is paid in advance, directly to Lifetime Legal and is non-refundable.

### FOR MORE DETAILS CONTACT

Barclay House, 1 High Street, Dunmow, Essex, CM6 1UU

T: 01371 878322 | W: [www.intercountry.co.uk](http://www.intercountry.co.uk)

**Intercountry**  
Estate and Letting Agents