



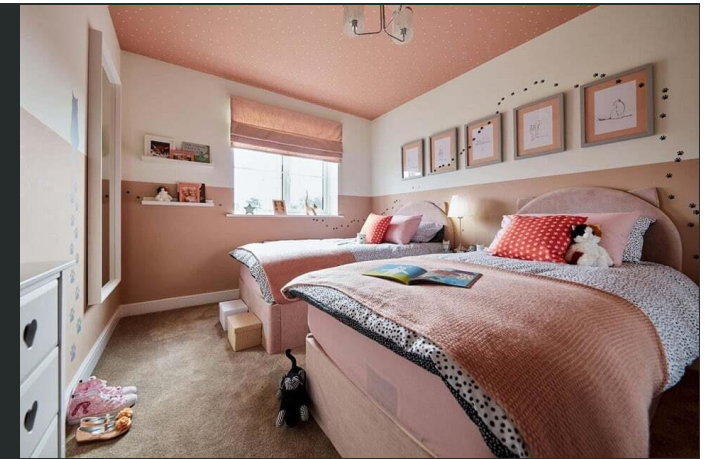
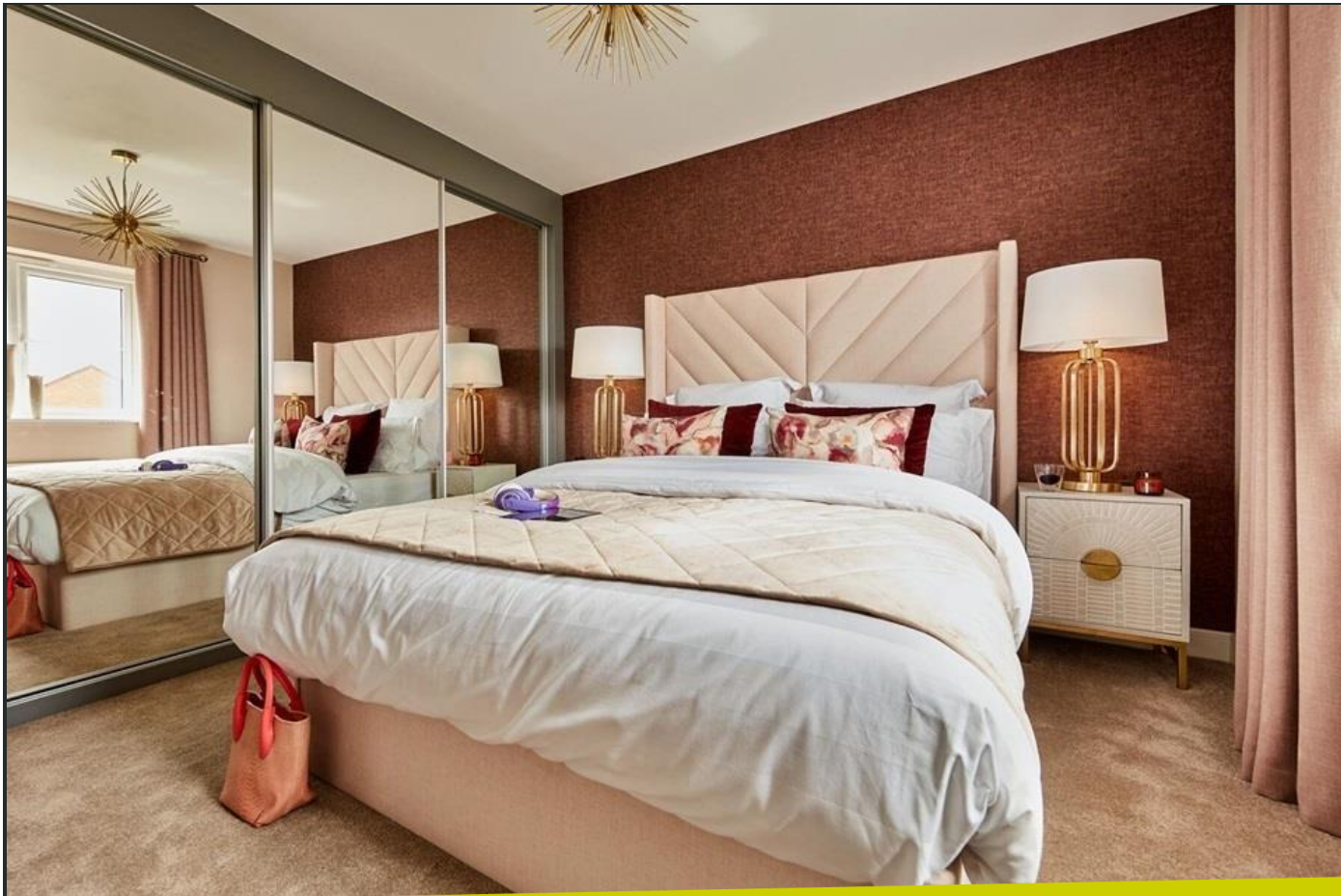
Plot 118, The Manford, Tudor Park, West
Road, Sawbridgeworth, Hertfordshire,
CM21 0BL

Asking Price: £650,000
Freehold

www.intercounty.co.uk



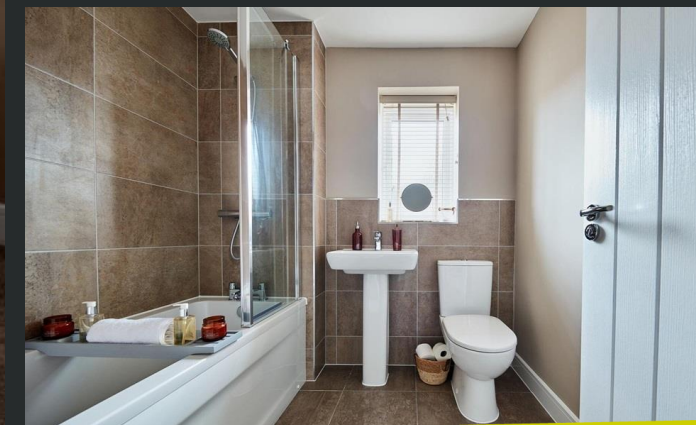
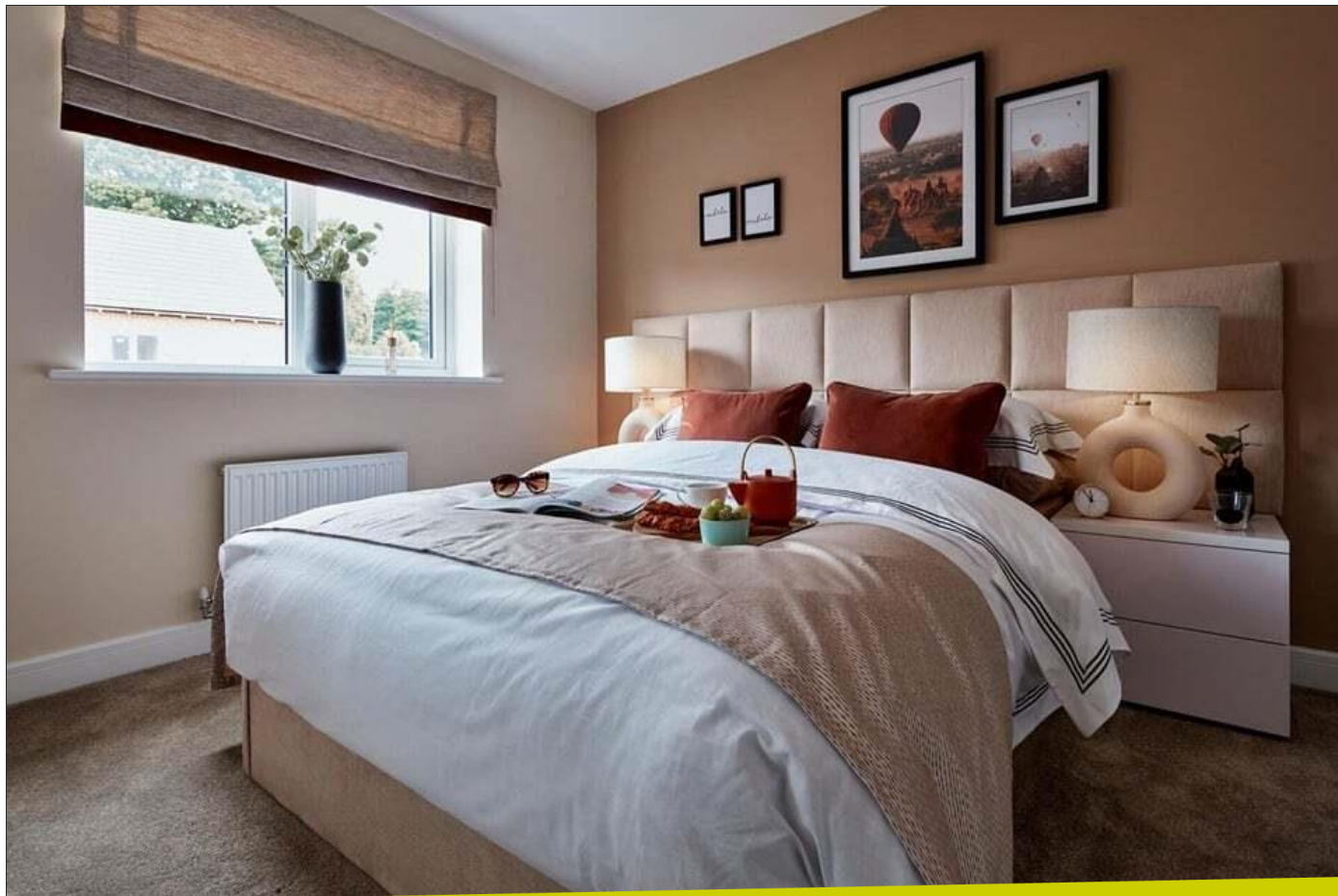
Intercounty
Estate and Letting Agents



Perfect for families, The Manford home has been designed with flexible living in mind.

The open-plan kitchen / diner is the hub of the home where everyone can enjoy time together, while the living room provides a quieter zone for movies and relaxing. Working from home? Head to the study at the front of the house where you can concentrate without distractions. Three well-proportioned bedrooms upstairs are ideal for kids and guests, while the main bedroom with ensuite is a peaceful sanctuary for the grown-ups. Pictures are for representation only.

Offering a choice of 2, 3, 4 and 5 bedroom homes in a lovely semi-rural setting, with amenities nearby, Tudor Park presents an opportunity to live the quintessential East Hertfordshire lifestyle. The homes on this development have been thoughtfully designed to blend in with the local area and scenery.



Detached Family Home
4 Double Bedrooms
1368 Sq Feet of Accommodation
Kitchen/Dining Room
Living Room & Study
Bathroom & En-Suite
Garage & 2 Parking Spaces
£230 Annual Service Charge

ADDITIONAL INFORMATION

With plenty of greenery across the development and surroundings which include routes through the countryside and beyond, you'll never be short of somewhere to walk or jog in a summers evening. The purpose built play area also offers a natural meeting point and is a safe place for children to enjoy the outdoors.



Total area: approx. 131.9 sq. metres (1419.2 sq. feet)

Kitchen/Dining Room 26'7" x 10'9" (8.1m x 3.28m)

Living Room 15'7" x 12'8" (4.75m x 3.86m)

Study 8'9" x 6'11" (2.67m x 2.1m)

Bedroom 12'9" x 12'3" (3.89m x 3.73m)

Bedroom 13'2" x 10'2" (4.01m x 3.1m)

Bedroom 12'1" x 10' (3.68m x 3.05m)

Bedroom 13' x 9'1" (3.96m x 2.77m)

AGENTS NOTES IMPORTANT NOTE TO PURCHASERS: We endeavour to make our sales particulars accurate and reliable, however, they do not constitute or form part of any offer or any contract and none is to be relied upon as statements of representation or fact. The services, systems and appliances listed in this specification have not been tested by us and no guarantee as to their operating ability or efficiency is given. All measurements have been taken as a guide to prospective buyers only and are not precise. Floorplans where included are not to scale and accuracy is not guaranteed. If you require clarification or further information on any points please contact us, especially if you are travelling some distance to view. Fixtures and fittings other than those mentioned are to be agreed with the seller. We may refer you to recommended providers of ancillary services such as Conveyancing, Financial Services, Insurance and Surveying. We may receive a commission payment fee or other benefit (known as a referral fee) for recommending their service. You are not under any obligation to use the services of the recommended provider. The ancillary service provider may be an associated company of Intercountry.

ANTI-MONEY LAUNDERING We are required by law to conduct anti-money laundering checks on all those selling or buying a property. Whilst we retain responsibility for ensuring checks are carried out correctly and for ongoing monitoring, the initial checks are carried out on our behalf by Lifetime Legal who will contact you once you have agreed to instruct us in your sale or had an offer accepted on a property you wish to buy. The cost of these checks is £36 inc VAT, which covers the cost of obtaining relevant data and any manual checks and monitoring which might be required. This fee is paid in advance, directly to Lifetime Legal and is non-refundable.

FOR MORE DETAILS CONTACT

1 Bell Street, Sawbridgeworth, Hertfordshire, CM21 9AR

T: 01279 600333 | W: www.intercountry.co.uk

Intercountry
Estate and Letting Agents