



6 Lockview, Sheering Mill Lane,
Sawbridgeworth, Hertfordshire, CM21 9NE

Offers in excess of: £249,000
Leasehold

www.intercounty.co.uk



Intercounty
Estate and Letting Agents



A larger than average two bedroom first floor apartment situated in a sought after location in the very heart of Sawbridgeworth close to both High street and station. The property offers an entrance hall, good sized kitchen and dining room, large lounge, two double bedrooms, family shower room and a separate WC. The property has central heating and double glazing.

Outside offers an underground storage outbuilding, a pretty, private garden and shared drying area.

There are 86 years remaining on the lease, service charge is £802.00 per year and the ground rent is £10.00 per year.

EPC Rating E. Council Tax Band C.



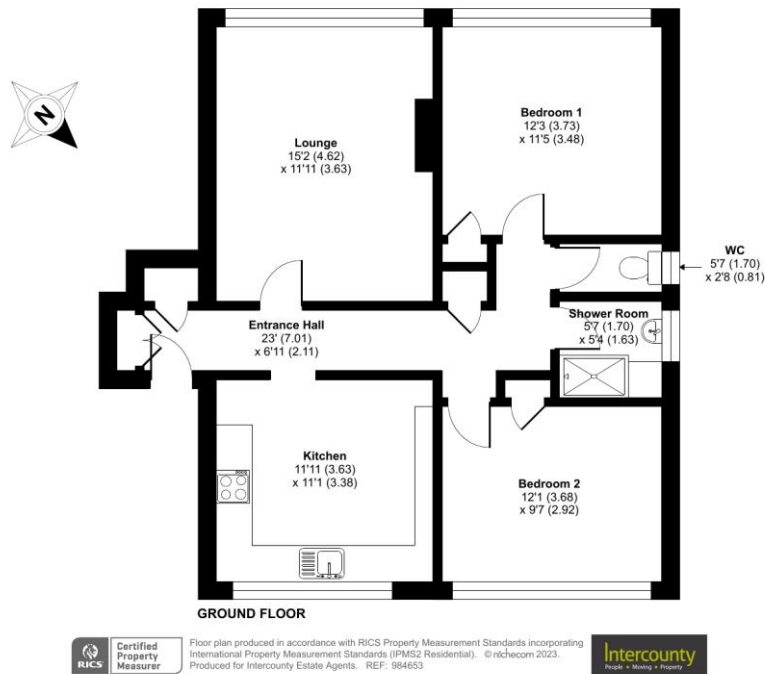
- 2 Bedroom First Floor Apartment
- Larger Than Average
- Central Position
- Private Garden
- Underground Storage Outbuilding
- Light & Airy
- Potential Rental Income £1100 PCM
- Council Tax Band C
- EPC Rating E

ADDITIONAL INFORMATION

Lease, ground rent and maintenance details have been provided by the seller, but their accuracy cannot be guaranteed, as we may not have seen a copy of the original lease. Should you proceed with the purchase of this property, lease details must be verified by your solicitor.

Lockview, Sheering Mill Lane, Sawbridgeworth, CM21

Approximate Area = 785 sq ft / 72.9 sq m
For identification only - Not to scale



Entrance Hall 23' x 6'11" (7m x 2.1m)
Kitchen 11'11" x 11'1" (3.63m x 3.38m)
Lounge 15'2" x 11'11" (4.62m x 3.63m)
Bedroom 1 12'3" x 11'5" (3.73m x 3.48m)
Bedroom 2 12'1" x 9'7" (3.68m x 2.92m)
Shower Room 5'7" x 5'4" (1.7m x 1.63m)
Separate WC 5'7" x 2'8" (1.7m x 0.81m)

AGENTS NOTES IMPORTANT NOTE TO PURCHASERS: We endeavour to make our sales particulars accurate and reliable, however, they do not constitute or form part of any offer or any contract and none is to be relied upon as statements of representation or fact. The services, systems and appliances listed in this specification have not been tested by us and no guarantee as to their operating ability or efficiency is given. All measurements have been taken as a guide to prospective buyers only and are not precise. Floorplans where included are not to scale and accuracy is not guaranteed. If you require clarification or further information on any points please contact us, especially if you are travelling some distance to view. Fixtures and fittings other than those mentioned are to be agreed with the seller. We may refer you to recommended providers of ancillary services such as Conveyancing, Financial Services, Insurance and Surveying. We may receive a commission payment fee or other benefit (known as a referral fee) for recommending their service. You are not under any obligation to use the services of the recommended provider. The ancillary service provider may be an associated company of Intercounty.

ANTI-MONEY LAUNDERING We are required by law to conduct anti-money laundering checks on all those selling or buying a property. Whilst we retain responsibility for ensuring checks are carried out correctly and for ongoing monitoring, the initial checks are carried out on our behalf by Lifetime Legal who will contact you once you have agreed to instruct us in your sale or had an offer accepted on a property you wish to buy. The cost of these checks is £60 inc VAT, which covers the cost of obtaining relevant data and any manual checks and monitoring which might be required. This fee is paid in advance, directly to Lifetime Legal and is non-refundable.

FOR MORE DETAILS CONTACT

1 Bell Street, Sawbridgeworth, Hertfordshire, CM21 9AR

T: 01279 600333 | W: www.intercounty.co.uk

Intercounty
Estate and Letting Agents