



Flat 27, Elliott Court, Legion Way,
Bishop's Stortford, Hertfordshire, CM23 2UG

www.intercounty.co.uk

Asking Price: £200,000
Leasehold



Intercounty
Estate and Letting Agents



No onward chain.

Over 60's development offering excellent communal facilities including TV lounge, laundry room, communal gardens, parking and warden assistance. A beautifully presented, larger than average, one bedroom, first floor apartment which has been modernised to a good standard throughout. Internal accommodation offers a good-sized lounge, generous bedroom and recently re-fitted kitchen and bathroom.

The property is leasehold with 102 years remaining on the lease. The annual service charge is £3200 and ground rent is £680 per annum.

EPC Band C. Council Tax Band C.



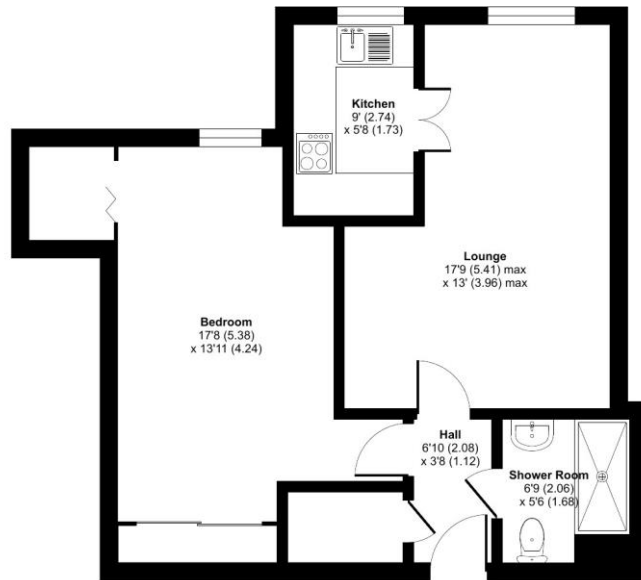
Over 60's Development
1 Bedroom Apartment
1st Floor
Excellent Communal Facilities
No Onward Chain
Refurbished Throughout
EPC Band C
Council Tax Band C

ADDITIONAL INFORMATION

Lease, ground rent and maintenance details have been provided by the seller, but their accuracy cannot be guaranteed, as we may not have seen a copy of the original lease. Should you proceed with the purchase of this property, lease details must be verified by your solicitor.

Elliott Court, Legion Way, Bishop's Stortford, CM23

Approximate Area = 564 sq ft / 52.3 sq m
For identification only - Not to scale



FIRST FLOOR



Floor plan produced in accordance with RICS Property Measurement Standards incorporating International Property Measurement Standards (IPMS2 Residential). ©richcom 2023. Produced for Intercounty Estate Agents. REF: 995639



Entrance Hall 6'10" x 3'8" (2.08m x 1.12m)

Shower Room 6'9" x 5'6" (2.06m x 1.68m)

Lounge 17'9" x 13' (5.4m x 3.96m)

Kitchen 9' x 5'8" (2.74m x 1.73m)

Bedroom 17'8" x 13'11" (5.38m x 4.24m)

AGENTS NOTES IMPORTANT NOTE TO PURCHASERS: We endeavour to make our sales particulars accurate and reliable, however, they do not constitute or form part of any offer or any contract and none is to be relied upon as statements of representation or fact. The services, systems and appliances listed in this specification have not been tested by us and no guarantee as to their operating ability or efficiency is given. All measurements have been taken as a guide to prospective buyers only and are not precise. Floorplans where included are not to scale and accuracy is not guaranteed. If you require clarification or further information on any points please contact us, especially if you are travelling some distance to view. Fixtures and fittings other than those mentioned are to be agreed with the seller. We may refer you to recommended providers of ancillary services such as Conveyancing, Financial Services, Insurance and Surveying. We may receive a commission payment fee or other benefit (known as a referral fee) for recommending their service. You are not under any obligation to use the services of the recommended provider. The ancillary service provider may be an associated company of Intercounty.

ANTI-MONEY LAUNDERING We are required by law to conduct anti-money laundering checks on all those selling or buying a property. Whilst we retain responsibility for ensuring checks are carried out correctly and for ongoing monitoring, the initial checks are carried out on our behalf by Lifetime Legal who will contact you once you have agreed to instruct us in your sale or had an offer accepted on a property you wish to buy. The cost of these checks is £36 inc VAT, which covers the cost of obtaining relevant data and any manual checks and monitoring which might be required. This fee is paid in advance, directly to Lifetime Legal and is non-refundable.

FOR MORE DETAILS CONTACT

21 North Street, Bishop's Stortford, Hertfordshire, CM23 2LD

T: 01279 757250 | W: www.intercounty.co.uk

Intercounty
Estate and Letting Agents